

# Vinterslanten 2018



<b>Oil Pattern Distance:</b>	<b>41 Feet</b>	<b>Reverse Brush Drop:</b>	<b>32 Feet</b>	<b>Oil Per Board:</b>	<b>50 uL</b>
<b>Forward Oil Total:</b>	<b>14.5 mL</b>	<b>Reverse Oil Total:</b>	<b>10 mL</b>	<b>Volume Oil Total:</b>	<b>24.5 mL</b>
<b>Forward Boards Crossed:</b>	<b>290 Boards</b>	<b>Reverse Boards Crossed:</b>	<b>200 Boards</b>	<b>Total Boards Crossed:</b>	<b>490 Boards</b>

	Start	Stop	Loads	Speed	Crossed	Start	End	Feet	T.Oil
1	6L	6R	3	14	87	0.0	3.9	3.9	4350
2	7L	7R	1	14	27	3.9	5.8	1.9	1350
3	8L	8R	2	18	50	5.8	10.9	5.1	2500
4	9L	9R	2	18	46	10.9	16.0	5.1	2300
5	10L	10R	2	22	42	16.0	22.2	6.2	2100
6	11L	11R	2	22	38	22.2	28.4	6.2	1900
7	2L	2R	0	26	0	28.4	36.0	7.6	0
8	2L	2R	0	30	0	36.0	41.0	5.0	0

Navigation: Forward Reverse More

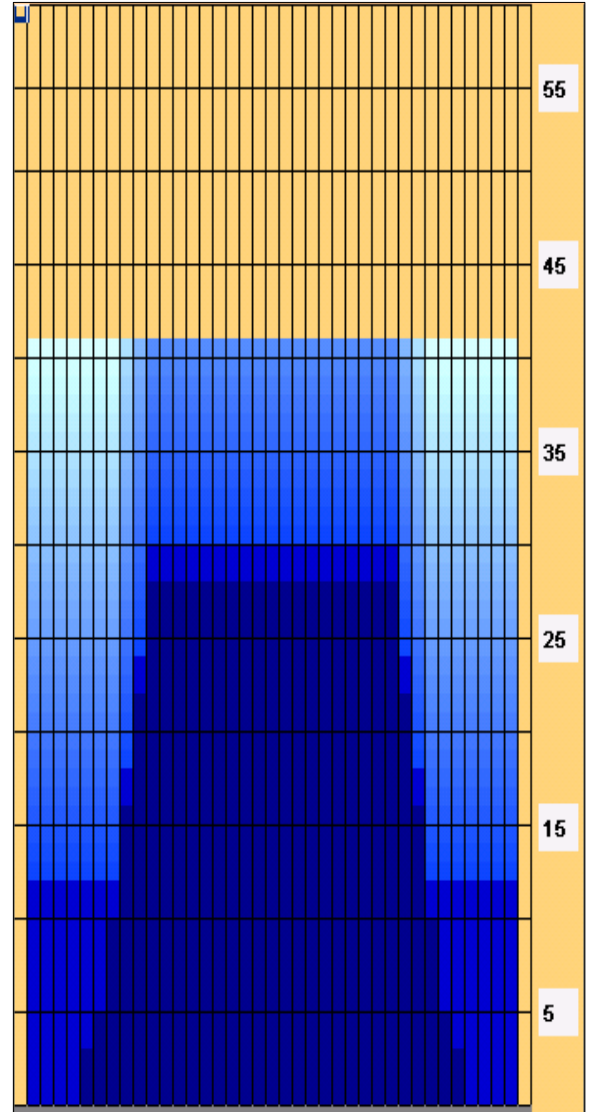
	Start	Stop	Loads	Speed	Crossed	Start	End	Feet	T.Oil
1	2L	2R	0	30	0	41.0	30.0	-11.0	0
2	11L	11R	2	22	38	30.0	23.8	-6.2	1900
3	10L	10R	2	22	42	23.8	17.6	-6.2	2100
4	9L	9R	2	18	46	17.6	12.5	-5.1	2300
5	2L	2R	2	18	74	12.5	7.4	-5.1	3700
6	2L	2R	0	14	0	7.4	0.0	-7.4	0

Navigation: Forward Reverse More

Conditioner:  
Type In or Select One

TransferType:  
Type In or Select One

- Forward
- Reverse
- Combined
- Buff



Item	3L-7L:18L-18R	8L-12L:18L-18R	13L-17L:18L-18R	18L-18R:17R-13R	18L-18R:12R-8R	18L-18R:7R-3R
Description	Outside Track:Middle	Middle Track:Middle	Inside Track:Middle	Middle: Inside Track	Middle:Middle Track	Middle:Outside Track
Track Zone Ratio	5.88	1.32	1	1	1.32	5.88

